

2022 ANNUAL REPORT



14 ELM STREET, MILTON, PA 17847

(570) 658-9880 • INFO@DIGFB.ORG • DIGFB.ORG • @DIGFURNITUREBANK

BOARD OF DIRECTORS:

Alicia Showers, Chair
Zach Kline, Vice Chair
Corey Tappan, Treasurer
Carly Klinger, Secretary

Michael Krout
Cathleen Stenglein
Emily Stotter

FINANCE COMMITTEE:

Corey Tappan Ellen Ruby Joe Stenglein

FUNDRAISING COMMITTEE:

Carly Klinger Nicole Peterson Zach Stotter
Angie Palermo Alicia Showers Jacob Tomaszewski

FULL-TIME OPERATIONS:

Emily Gorski, Founder & Executive Director
Gabby Herman, AmeriCorps Logistics Coordinator

2022 FOUNDATION PARTNERS:



DIRECTOR'S LETTER:

I'm going to write this year's letter in honor of one of our core values: **humility**. I am writing this 2022 reflection in June of 2023. While I'm going to do my best to keep 2023 out of this, I've got to be honest... I'm not entirely sure that the year has *actually* changed?!



Joking aside, 2022 was the year that I thought to myself: "OK, time to fasten the seatbelt!" The honeymoon phase was over and the exhaustion, overwhelm, and learning lessons set in. I even finished the year off with a severely sprained ankle after carrying an empty box down the stairs. (I can hear our volunteer, Jan, in my head now: "I mean... *REALLY???*")

But luckily, this year, it wasn't just me. Let's be honest, it was never **just** me, but the day-to-day normally (and understandably) fell on my shoulders. However, 2022 solidified the most trustworthy and committed day-to-day team that I could have ever imagined. When I was away for a month, we hit a record-high for deliveries made. When I couldn't walk, we moved an entire furniture inventory to a new location (I swear I didn't plan that).

Never having had a newborn to take care of, I often imagine that these first years of DIG might be similar to that. In the beginning, it felt like it was just me, taking care of this massively important thing that I created but was, truthfully, not fully trained for. As we head into year three, I can't help but beam with pride when I sit on the sidelines and watch this big, bumbling toddler start to walk with the encouragement of the community around it.

I never take for granted the belief that our small but mighty team has in the mission of DIG. I know that my airheaded days are likely just beginning, but I also know that I will have people in my corner to pull me up, give me a loving yet attention-grabbing shake, and say: "I mean... *REALLY???*".

In humility (and gratitude),

Handwritten signature of Emily Gorski.

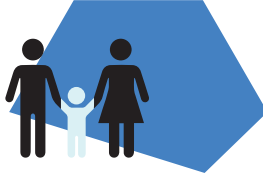
Emily Gorski,
Founder & Executive Director

2022 SNAPSHOT:



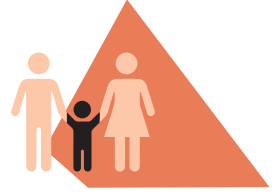
182

UNDUPLICATED
FAMILIES SERVED



257

UNDUPLICATED
ADULTS SERVED



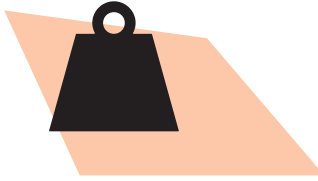
235

UNDUPLICATED
CHILDREN SERVED



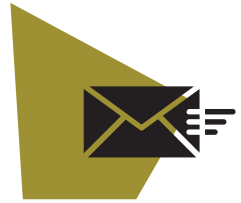
187

NEW BEDS
PROVIDED



53

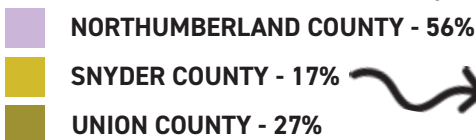
TONS OF FURNITURE
DISTRIBUTED



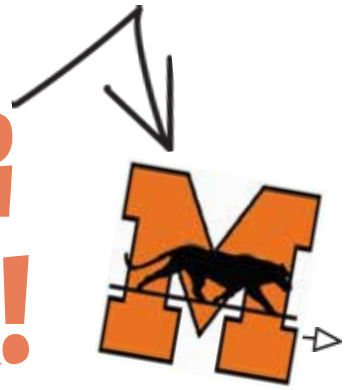
255

REFERRALS
RECEIVED

CLIENTS SERVED BY COUNTY:



NEW KIDS IN THE BLOCK!



After more than a year of searching, we found ourselves BACK in the building that started our search for space in the first place! As of January 2023, DIG is officially new "residents" of Milton, PA. Nestled in Northumberland County, just across the river from Union County, we are happy to be more geographically central to our clientele. This move will undoubtedly save our organization, clients, and volunteers on gas costs, while providing us with more than 4x the space for furniture storage and display, repairs, administration, and client shopping.

Thank you to our partners and volunteers in your help with our BIG move and ongoing renovation of this special new space.

It's not easy moving one house, let alone furniture for more than 70 homes! Your help means that we can get back to serving local families as quickly as possible.



FINANCIALS:

INCOME

Corporate Donations	\$5,813.16
Foundation Grants	\$105,500.00
Individual Donations	\$41,995.19
Sales	\$335.39
Total Income	\$153,558.35

COST OF GOODS SOLD (COG)

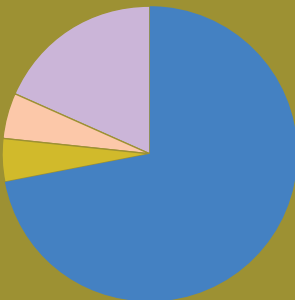
Buy New Program	\$701.70
Good Nights' Sleep Fund	\$49,031.81
Total COG	\$49,733.51
Gross Profit	\$103,824.84

EXPENSE

General Operating	\$21,991.67
Development	\$5,286.91
Personnel	\$8,125.00
Total Expense	\$35,403.58

Net Income \$68,506.65

2022 FUNDING SOURCES:



- GRANTS - 72.08%
- HOMEBUILDERS* - 4.8%
- EVENTS - 4.87%
- INDIVIDUALS - 18.25%

*Homebuilders are a group of monthly donors that help us generate \$772 of reliable funding per month!



MISSION MOMENT:

At DIG, we are trusted to hear and learn from so many stories during conversations with our clients. We share laughs, tears, and so many similarities. By making time to learn about our clients, not only are we gaining information to better inform our service delivery, but we are also working towards our mission by giving the dignity of time and empathy in a time where perhaps it is needed most.

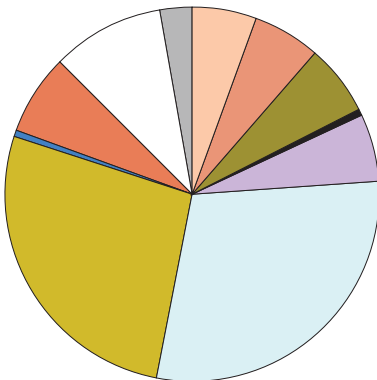
Cindy was referred to us in August 2022 after gaining custody of her two grandchildren due to her son's sudden passing. While managing her grief and supporting the children, she spent months trying to find a home big enough for her new household that was also Section-8 approved. As soon as they finally found their perfect house, we received her referral and scheduled a time to deliver as many items as possible to turn it into their home. The furniture provided through DIG, including the items pictured below, has played a major role in helping Cindy keep custody of her grandchildren. We wish them many years of happy memories and healing through this new start.

MEET
CINDY*



*Names were changed to protect the privacy of the client

CLIENT REASONS FOR NEEDING ASSISTANCE:



- DEATH OR DIVORCE - 11%
- RECENT DRUG/ALCOHOL TREATMENT - 11%
- FIRE/FLOOD - 12%
- RECENT HOSPITALIZATION - 1%
- RECENT MENTAL HEALTH TREATMENT - 11%
- RECENT HOMELESSNESS - 56%
- RELOCATION - 52%
- REFUGEE/IMMIGRATION - 1%
- PHYSICAL DISEASE/DISABILITY - 13%
- RECENT LOSS OF EMPLOYMENT - 19%
- RECENTLY RELEASED FROM INCARCERATION - 5%

LEARN MORE AT DIGFB.ORG

HOW TO HELP:

GIVE FURNITURE

Simply put: we wouldn't be able to do what we do without your gently used furniture and household items. Visit digfb.org/donation-guide to learn more about what we can and cannot accept and to schedule your drop off at our downtown Milton location.

GIVE FUNDS

Your financial generosity helps us continue to grow our impact by supporting all the things that us who we are: capacity for our staff, support for our volunteers, maintenance of our truck, and sustainability for our space. DIG makes it easy and convenient to make a gift at your comfort level online, in-person, or through their legacy. Donors can choose to give one-time or make an ongoing, monthly commitment to support our work.

VOLUNTEER

Our diverse, generous, kind volunteer community make achieving our mission that much easier (and fun!). DIG has a variety of opportunities that people of all backgrounds, skills, interests, and abilities can enjoy.

SHOP

A new and growing component of DIG is our public-facing vintage shop at 13 S Front Street, Milton. Browse through our ever-changing selection of funky, unique, and plain strange donations gifted to us by the community. 100% of proceeds support the ongoing work of our mission.